

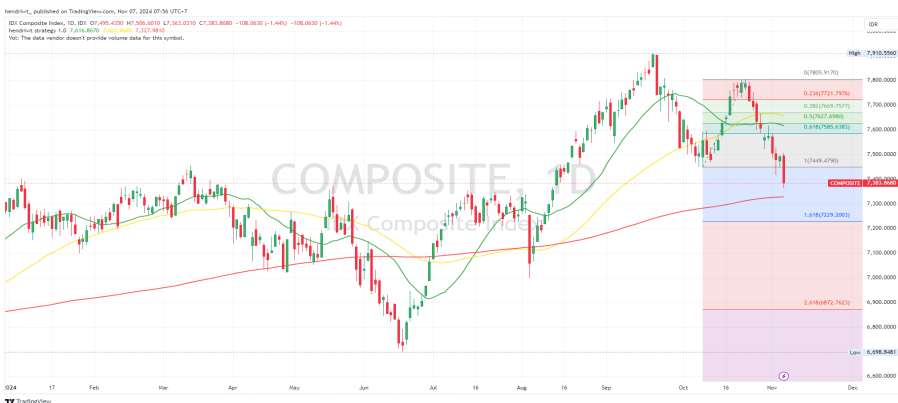
<b>IHSG</b>	<b>7,384</b>
Change (%)	<b>-1.44%</b>
Net Foreign	<b>38.74 T</b>
Support	<b>7450</b>
Resistance	<b>7530</b>

Sectoral	Last	Change %
IDX:IDX BASIC	1,388.9	0.18%
IDX:IDX CYCLIC	869.8	-0.09%
IDX:IDX ENERGY	2,706.0	-1.24%
IDX:IDX FINANCE	1,494.8	-1.77%
IDX:IDX HEALTH	1,495.9	-0.49%
IDX:IDX NONCYC	746.7	-0.99%
IDX:IDX INDUST	1,088.8	0.38%
IDX:IDX INFRA	1,445.7	-1.12%
IDX:IDX PROPERT	802.2	-2.00%
IDX:IDX TECHNO	3,798.9	-2.96%
IDX:IDX TRANS	1,423.3	-0.60%

Commodities	Last	Change %
Crude Oil Nov 24	68.3	0.10%
Brent Crude Oil	71.6	0.13%
Gold Dec 24	2684.5	0.61%
Copper Dec 24	4.7	1.64%

Indeks	Close	Change %
Dow Jones Industrial Average	43,730	3.57%
S&P 500	5,929	2.53%
NASDAQ Composite	18,983	2.95%
FTSE 100	8,167	-0.07%
DAX PERFORMANCE-INDEX	19,039	-1.13%
IHSG	7,384	-1.44%
HANG SENG INDEX	20,538	0.00%
Nikkei 225	39,258	-0.56%

Indikator	Tingkat
GDP Growth Rate	3.79 percent
GDP Annual Growth Rate	5.05 percent
Unemployment Rate	4.82 percent
Inflation Rate	1.84 percent
Inflation Rate MoM	-0.12 percent
Interest Rate	6 percent
Balance of Trade	3257 USD Million
Current Account	-3021 USD Million
Current Account to GDP	-0.3 percent of GDP
Government Debt to GDP	39.3 percent of GDP
Government Budget	-1.65 percent of GDP
Business Confidence	14.4 points
Manufacturing PMI	49.2 points



### NEWS HIGHLIGHT

- Kuartal III 2024, Laba dan Pendapatan SMMT Kuartal III 2024 Melorot
- Usai Tekor, Laba Emiten Salim (META) Kuartal III 2024 Naik 167 Persen
- Menyala, Laba OASA Kuartal III 2024 Meroket 343 Persen
- Laba Meroket 190 Persen, CNKO Kuartal III 2024 Defisit Rp3,89 Triliun
- Laba Positif, Kuartal III 2024 DGIK Berbalut Defisit Rp127 Miliar

### NEWS MARKET

- \*Kemenangan Trump di Pemilu AS:\*
- Donald Trump memenangkan Pilpres AS dengan 277 suara electoral, mengalahkan Kamala Harris.
- Kemenangan ini mendorong kenaikan signifikan di Wall Street, dengan tiga indeks utama mencetak rekor tertinggi.
- Bitcoin juga mencapai rekor tertinggi sepanjang masa di atas level US\$75.000.
- \*Fokus Pasar Beralih ke Kebijakan Suku Bunga The Fed:\*
- Setelah pemilu AS, fokus beralih ke keputusan suku bunga The Fed pada Kamis malam waktu AS (Jumat dini hari waktu Indonesia).
- Pasar memprediksi pemangkasan suku bunga sebesar 0,25%, yang akan menjadi pemangkasan kedua dalam siklus ini.
- Rilis data tenaga kerja AS menunjukkan penurunan, dengan tambahan pekerjaan di luar pertanian hanya 12.000, jauh di bawah ekspektasi 100.000.
- \*Rilis Data Ekonomi China:\*
- China dijadwalkan merilis data cadangan devisa untuk Oktober 2024, setelah sebelumnya mencatat peningkatan cadangan devisa pada September 2024 sebesar US\$3,316 triliun.
- Cadangan emas China juga meningkat, sejalan dengan lonjakan harga emas di tengah kebijakan moneter global yang lebih longgar.
- \*Cadangan Devisa Indonesia:\*
- Pasar domestik menanti data cadangan devisa Indonesia untuk periode Oktober 2024 yang akan dirilis oleh Bank Indonesia.
- Sebelumnya, cadangan devisa Indonesia pada akhir September 2024 tercatat sebesar US\$149,9 miliar, turun dari Agustus 2024.
- Cadangan devisa tetap dinilai memadai oleh BI, mendukung ketahanan sektor eksternal serta prospek positif ekspor dan transaksi modal.
- \*Kesimpulan:\*
- Sentimen eksternal seperti kemenangan Donald Trump, keputusan suku bunga The Fed, dan data ekonomi China serta Indonesia akan menjadi penggerak utama pasar keuangan RI hari ini.

Sources : CNBC Indonesia, Trading economic, [kontan.co.id](http://kontan.co.id),

Stock Recommendation						
Stock	Last Price	Recommendation	TP 1	TP 2	Stop Loss	Commentary
CPIN	5,075	Trading Buy	5,175	5,325	4,920	Huge Volume accumulation, entry level: 4930-5075
AMMN	9,200	Speculative Buy	9,375	9,650	8,900	Oversold, entry level: 8925-9200
AVIA	484	Trading Buy	492	505	468	Consolidation, entry level: 470-484
TINS	1,440	Sell on Strength	1,465	1,510	1,395	Overbought
BRMS	440	Sell on Strength	448	462	426	Overbought

# LQ45 TECHNICAL VIEW



Thursday, November 7, 2024

Daily Support & Resistance					
CODE	S2	S1	Price	R1	R2
ACES	750	795	855	945	975
ADRO	3,820	3,900	4,010	4,160	4,210
AKRA	1,275	1,300	1,340	1,390	1,410
AMRT	2,840	2,970	3,130	3,390	3,470
ANTM	1,455	1,490	1,540	1,610	1,635
ARTO	2,300	2,430	2,560	2,810	2,870
ASII	4,840	4,930	5,050	5,225	5,275
BBCA	10,250	10,300	10,450	10,550	10,625
BBNI	4,680	4,890	5,125	5,525	5,650
BBRI	4,420	4,510	4,600	4,770	4,810
BBTN	1,210	1,260	1,330	1,430	1,465
BMRI	6,050	6,300	6,550	7,050	7,175
BRIS	2,710	2,780	2,900	3,040	3,100
BRPT	860	895	930	995	1,010
BUKA	114	116	118	122	123
CPIN	4,730	4,810	5,075	5,225	5,350
EMTK	430	438	460	474	484
ESSA	905	915	935	955	965
EXCL	2,160	2,190	2,220	2,270	2,280
GGRM	12,400	12,825	13,250	14,075	14,275
GOTO	56	59	64	69	71
HRUM	1,130	1,155	1,185	1,235	1,250
ICBP	11,500	11,775	12,150	12,675	12,850
INCO	3,530	3,620	3,730	3,900	3,950
INDF	7,400	7,550	7,800	8,100	8,225
INKP	7,050	7,125	7,375	7,525	7,650
INTP	6,475	6,650	6,825	7,150	7,225
ITMG	24,700	24,900	25,250	25,650	25,825
KLBF	1,545	1,565	1,590	1,625	1,635
MAPI	1,275	1,355	1,465	1,625	1,680
MBMA	498	510	525	550	555
MDKA	2,150	2,210	2,270	2,390	2,420
MEDC	1,100	1,150	1,205	1,300	1,325
MTEL	585	590	600	610	615
PGAS	1,475	1,490	1,515	1,540	1,550
PGEO	1,020	1,035	1,055	1,085	1,095
PTBA	2,770	2,800	2,860	2,920	2,950
PTMP	64	66	69	72	73
SIDO	555	565	575	595	600
SMGR	3,510	3,570	3,650	3,770	3,810
SRTG	2,220	2,310	2,400	2,570	2,610
TLKM	2,660	2,700	2,740	2,820	2,840
TOWR	740	750	770	790	800
UNTR	26,350	26,675	27,200	27,825	28,075
UNVR	1,690	1,715	1,755	1,805	1,825

Price Performance									
CODE	Daily (%)	P/E	YTD (%)	%	52W Low	CURRENT POSITION	52W High	%	
ACES	-6.56%	17	18.8%	29%	665	▼	995	-14%	
ADRO	-0.74%	5	68.5%	73%	2,320	▼	4,300	-7%	
AKRA	-1.47%	10	-9.2%	3%	1,295	▼	1,865	-28%	
AMRT	-4.86%	36	6.8%	26%	2,490	▼	3,650	-14%	
ANTM	-2.22%	15	-9.7%	31%	1,175	▼	1,845	-17%	
ARTO	-6.57%	332	-11.7%	39%	1,840	▼	3,860	-34%	
ASII	-2.42%	6	-10.6%	18%	4,290	▼	5,950	-15%	
BBCA	-0.48%	24	11.2%	20%	8,675	▼	10,950	-5%	
BBNI	-5.09%	9	-4.7%	20%	4,260	▼	6,250	-18%	
BBRI	-2.34%	11	-19.7%	12%	4,090	▼	6,450	-29%	
BBTN	-2.92%	5	6.4%	13%	1,175	▼	1,610	-17%	
BMRI	-5.42%	11	8.3%	19%	5,525	▼	7,550	-13%	
BRIS	-2.36%	20	66.7%	99%	1,455	▼	3,350	-13%	
BRPT	-3.63%	347	-30.1%	6%	874	▼	1,947	-52%	
BUKA	0.85%	#N/A	-45.4%	10%	107	▼	222	-47%	
CPIN	3.57%	41	1.0%	15%	4,410	▼	5,775	-12%	
EMTK	2.22%	61	-22.0%	31%	350	▼	670	-31%	
ESSA	0.54%	17	76.4%	91%	490	▼	1,010	-7%	
EXCL	-0.45%	18	11.0%	18%	1,885	▼	2,650	-16%	
GGRM	-0.38%	14	-34.8%	0%	13,200	▼	22,975	-42%	
GOTO	-3.03%	#N/A	-25.6%	28%	50	▼	116	-45%	
HRUM	-2.07%	9	-11.2%	13%	1,050	▼	1,590	-25%	
ICBP	-3.57%	18	14.9%	27%	9,600	▼	12,875	-6%	
INCO	-2.86%	24	-13.5%	5%	3,554	▼	5,218	-29%	
INDF	-0.95%	7	20.9%	33%	5,850	▼	8,000	-3%	
INKP	1.37%	8	-11.4%	2%	7,200	▼	10,000	-26%	
INTP	-1.80%	13	-27.4%	9%	6,275	▼	10,200	-33%	
ITMG	-0.49%	6	-1.6%	7%	23,575	▼	28,775	-12%	
KLBF	-0.62%	24	-1.2%	16%	1,375	▼	1,795	-11%	
MAPI	-5.79%	14	-18.2%	18%	1,240	▼	2,050	-29%	
MBMA	0.00%	74	-6.3%	10%	476	▼	730	-28%	
MDKA	-1.30%	215	-15.9%	10%	2,060	▼	2,970	-24%	
MEDC	-4.74%	5	4.3%	23%	980	▼	1,635	-26%	
MTEL	-0.83%	23	-14.9%	9%	550	▼	765	-22%	
PGAS	0.00%	7	34.1%	43%	1,060	▼	1,700	-11%	
PGEO	-1.40%	17	-9.8%	7%	990	▼	1,500	-30%	
PTBA	-1.04%	6	17.2%	24%	2,300	▼	3,180	-10%	
PTMP	-2.82%	13	-65.8%	33%	52	▼	338	-80%	
SIDO	-2.54%	15	9.5%	19%	484	▼	780	-26%	
SMGR	0.55%	21	-43.0%	7%	3,410	▼	6,725	-46%	
SRTG	-4.00%	6	46.3%	96%	1,225	▼	2,800	-14%	
TLKM	-1.08%	12	-30.6%	1%	2,700	▼	4,240	-35%	
TOWR	-1.91%	12	-22.2%	17%	660	▼	1,030	-25%	
UNTR	0.74%	5	20.2%	30%	20,925	▼	28,150	-3%	
UNVR	-1.40%	18	-50.3%	1%	1,745	▼	3,700	-53%	

Sumber: Research Team Erdikha Elit Sekuritas

# LQ45 PRICE PERFORMANCE



Thursday, November 7, 2024

CODE	PRICE	Daily (%)	PER		52 WEEK PRICE PERFORMANCE	YTD (%)		PRICE	%	52W Low	CURRENT POSITION	52W High	%
ESSA	935	0.54%	17			76.42%		935	91%	490	▼	1,010	-7%
ADRO	4,010	-0.74%	5			68.49%		4,010	73%	2,320	▼	4,300	-7%
BRIS	2,900	-2.36%	20			66.67%		2,900	99%	1,455	▼	3,350	-13%
SRTG	2,400	-4.00%	6			46.34%		2,400	96%	1,225	▼	2,800	-14%
AMMN	9,200	2.22%	71			40.46%		9,200	57%	5,850	▼	15,000	-39%
PGAS	1,515	0.00%	7			34.07%		1,515	43%	1,060	▼	1,700	-11%
INDF	7,800	-0.95%	7			20.93%		7,800	33%	5,850	▼	8,000	-3%
UNTR	27,200	0.74%	5			20.22%		27,200	30%	20,925	▼	28,150	-3%
ACES	855	-6.56%	17			18.75%		855	29%	665	▼	995	-14%
PTBA	2,860	-1.04%	6			17.21%		2,860	24%	2,300	▼	3,180	-10%
ICBP	12,150	-3.57%	18			14.89%		12,150	27%	9,600	▼	12,875	-6%
BBCA	10,450	-0.48%	24			11.17%		10,450	20%	8,675	▼	10,950	-5%
EXCL	2,220	-0.45%	18			11.00%		2,220	18%	1,885	▼	2,650	-16%
SIDO	575	-2.54%	15			9.52%		575	19%	484	▼	780	-26%
BMRI	6,550	-5.42%	11			8.26%		6,550	19%	5,525	▼	7,550	-13%
AMRT	3,130	-4.86%	36			6.83%		3,130	26%	2,490	▼	3,650	-14%
BBTN	1,330	-2.92%	5			6.40%		1,330	13%	1,175	▼	1,610	-17%
MEDC	1,205	-4.74%	5			4.33%		1,205	23%	980	▼	1,635	-26%
CPIN	5,075	3.57%	41			1.00%		5,075	15%	4,410	▼	5,775	-12%
KLBF	1,590	-0.62%	24			-1.24%		1,590	16%	1,375	▼	1,795	-11%
ITMG	25,250	-0.49%	6			-1.56%		25,250	7%	23,575	▼	28,775	-12%
BBNI	5,125	-5.09%	9			-4.65%		5,125	20%	4,260	▼	6,250	-18%
MBMA	525	0.00%	74			-6.25%		525	10%	476	▼	730	-28%
AKRA	1,340	-1.47%	10			-9.15%		1,340	3%	1,295	▼	1,865	-28%
ANTM	1,540	-2.22%	15			-9.68%		1,540	31%	1,175	▼	1,845	-17%
PGEO	1,055	-1.40%	17			-9.83%		1,055	7%	990	▼	1,500	-30%
ASII	5,050	-2.42%	6			-10.62%		5,050	18%	4,290	▼	5,950	-15%
HRUM	1,185	-2.07%	9			-11.24%		1,185	13%	1,050	▼	1,590	-25%
INKP	7,375	1.37%	8			-11.41%		7,375	2%	7,200	▼	10,000	-26%
ARTO	2,560	-6.57%	332			-11.72%		2,560	39%	1,840	▼	3,860	-34%
INCO	3,730	-2.86%	24			-13.46%		3,730	5%	3,554	▼	5,218	-29%
MTEL	600	-0.83%	23			-14.89%		600	9%	550	▼	765	-22%
MDKA	2,270	-1.30%	215			-15.93%		2,270	10%	2,060	▼	2,970	-24%
MAPI	1,465	-5.79%	14			-18.16%		1,465	18%	1,240	▼	2,050	-29%
BBRI	4,600	-2.34%	11			-19.65%		4,600	12%	4,090	▼	6,450	-29%
TOWR	770	-1.91%	12			-22.22%		770	17%	660	▼	1,030	-25%
GOTO	64	-3.03%	#N/A			-25.58%		64	28%	50	▼	116	-45%
INTP	6,825	-1.80%	13			-27.39%		6,825	9%	6,275	▼	10,200	-33%
BRPT	930	-3.63%	347			-30.08%		930	6%	874	▼	1,947	-52%
TLKM	2,740	-1.08%	12			-30.63%		2,740	1%	2,700	▼	4,240	-35%
GGRM	13,250	-0.38%	14			-34.81%		13,250	0%	13,200	▼	22,975	-42%
SMGR	3,650	0.55%	21			-42.97%		3,650	7%	3,410	▼	6,725	-46%
BUKA	118	0.85%	#N/A			-45.37%		118	10%	107	▼	222	-47%
UNVR	1,755	-1.40%	18			-50.28%		1,755	1%	1,745	▼	3,700	-53%
ISAT	2,250	-5.86%	13			-76.00%		2,250	4%	2,160	▼	3,063	-27%

Sumber: Research Team Erdikha Elit Sekuritas

## KETERANGAN

**PER** : PER saat ini dibawah 10 kali

**YTD (%)** : Kinerja harga saat ini dibandingkan dengan harga saham awal tahun 45 saham yang memiliki likuiditas tinggi dan kapitalisasi pasar

**52W Low** : **Harga terendah** selama 52 Minggu terakhir

**52W High** : **Harga tertinggi** selama 52 Minggu terakhir

**LQ45** adalah Indeks yang mengukur kinerja harga dari besar serta didukung oleh fundamental perusahaan yang baik.

# MSCI PRICE PERFORMANCE



Thursday, November 7, 2024

CODE	PRICE	Daily (%)	PER	PRICE	52 WEEK PRICE PERFORMANCE	YTD (%)	PRICE	%	52W Low	CURRENT POSITION	52W High	%
1 ADRO	4,010	-0.74%	5	ADRO	4,010	68.49%	ADRO	4,010	73%	2,320	4,300	-7%
2 TPIA	7,575	-1.62%	#N/A	TPIA	7,575	44.29%	TPIA	7,575	167%	2,840	11,225	-33%
3 AMMN	9,200	2.22%	71	AMMN	9,200	40.46%	AMMN	9,200	57%	5,850	15,000	-39%
4 INDF	7,800	-0.95%	7	INDF	7,800	20.93%	INDF	7,800	33%	5,850	8,000	-3%
5 UNTR	27,200	0.74%	5	UNTR	27,200	20.22%	UNTR	27,200	30%	20,925	28,150	-3%
6 ICBP	12,150	-3.57%	18	ICBP	12,150	14.89%	ICBP	12,150	27%	9,600	12,875	-6%
7 BBKA	10,450	-0.48%	24	BBKA	10,450	11.17%	BBKA	10,450	20%	8,675	10,950	-5%
8 BMRI	6,550	-5.42%	11	BMRI	6,550	8.26%	BMRI	6,550	19%	5,525	7,550	-13%
9 AMRT	3,130	-4.86%	36	AMRT	3,130	6.83%	AMRT	3,130	26%	2,490	3,650	-14%
10 CPIN	5,075	3.57%	41	CPIN	5,075	1.00%	CPIN	5,075	15%	4,410	5,775	-12%
11 KLBF	1,590	-0.62%	24	KLBF	1,590	-1.24%	KLBF	1,590	16%	1,375	1,795	-11%
12 BBNI	5,125	-5.09%	9	BBNI	5,125	-4.65%	BBNI	5,125	20%	4,260	6,250	-18%
13 ANTM	1,540	-2.22%	15	ANTM	1,540	-9.68%	ANTM	1,540	31%	1,175	1,845	-17%
14 ASII	5,050	-2.42%	6	ASII	5,050	-10.62%	ASII	5,050	18%	4,290	5,950	-15%
15 INKP	7,375	1.37%	8	INKP	7,375	-11.41%	INKP	7,375	2%	7,200	10,000	-26%
16 MDKA	2,270	-1.30%	215	MDKA	2,270	-15.93%	MDKA	2,270	10%	2,060	2,970	-24%
17 BBRI	4,600	-2.34%	11	BBRI	4,600	-19.65%	BBRI	4,600	12%	4,090	6,450	-29%
18 GOTO	64	-3.03%	#N/A	GOTO	64	-25.58%	GOTO	64	28%	50	116	-45%
19 BRPT	930	-3.63%	347	BRPT	930	-30.08%	BRPT	930	6%	874	1,947	-52%
20 TLKM	2,740	-1.08%	12	TLKM	2,740	-30.63%	TLKM	2,740	1%	2,700	4,240	-35%
21 UNVR	1,755	-1.40%	18	UNVR	1,755	-50.28%	UNVR	1,755	1%	1,745	3,700	-53%

## Sector Weights for Monday, June 3, 2024

Sector	Weight%
Financials	57.94
Materials	12.77
Consumer Staples	8.48
Communication Services	7.6
Industrials	4.59
Energy	3.85
Consumer Discretionary	3.1
Health Care	1.66

## Industry Group Weights for Monday, June 3, 2024

Industry Group Name	Weight%
Banks	57.94
Materials	12.77
Telecommunication Services	7.6
Food Beverage & Tobacco	4.6
Capital Goods	4.59
Energy	3.85
Consumer Discretionary Distribution & Retail	3.1
Consumer Staples Distribution & Retail	2.62
Pharmaceuticals, Biotechnology & Life Sciences	1.66
Household & Personal Products	1.26

## INDONESIA

- MSCI Global Standard Indexes List  
 Additions -  
 Deletions ANTM

- MSCI Small Cap Indexes List  
 Additions : ANTM, CMRY, FILM, INCO, WIKA  
 Deletions : -

## NEXT

November 2024 Index Review  
 o Announcement date: 7 November 2024  
 o Effective date: 27 November 2024

Sumber: Research Team Erdikha Elit Sekuritas

## KETERANGAN

- PER** : PER saat ini dibawah 10 kali
- YTD (%)** : Kinerja harga saat ini dibandingkan dengan harga saham awal tahun
- 52W Low** : Harga terendah selama 52 Minggu terakhir
- 52W High** : Harga tertinggi selama 52 Minggu terakhir

# IDX80 PERFORMANCE



Thursday, November 7, 2024

260

CODE	PRICE	Daily (%)	PER	52 WEEK PRICE PERFORMANCE	YTD (%)	PRICE	%	52W Low	CURRENT POSITION	52W High	%
PANI	16,900	-2.87%	541		244.90%	PANI	16,900	312%	4,100	18,800	-10%
BRMS	440	6.80%	233		158.82%	BRMS	440	246%	127	488	-10%
ESSA	935	0.54%	17		76.42%	ESSA	935	91%	490	1,010	-7%
PNLF	464	-1.28%	11		75.76%	PNLF	464	92%	242	498	-7%
ADRO	4,010	-0.74%	5		68.49%	ADRO	4,010	73%	2,320	4,300	-7%
BRIS	2,900	-2.36%	20		66.67%	BRIS	2,900	99%	1,455	3,350	-13%
JPFA	1,735	-3.07%	10		47.03%	JPFA	1,735	64%	1,055	1,875	-7%
SRTG	2,400	-4.00%	6		46.34%	SRTG	2,400	96%	1,225	2,800	-14%
AMMN	9,200	2.22%	71		40.46%	AMMN	9,200	57%	5,850	15,000	-39%
PGAS	1,515	0.00%	7		34.07%	PGAS	1,515	43%	1,060	1,700	-11%
MAPA	995	-5.69%	20		21.34%	MAPA	995	46%	680	1,175	-15%
INDF	7,800	-0.95%	7		20.93%	INDF	7,800	33%	5,850	8,000	-3%
UNTR	27,200	0.74%	5		20.22%	UNTR	27,200	30%	20,925	28,150	-3%
GJTL	1,235	-4.26%	3		19.32%	GJTL	1,235	46%	845	1,490	-17%
ENRG	262	-5.07%	6		19.09%	ENRG	262	65%	159	310	-15%
ACES	855	-6.56%	17		18.75%	ACES	855	29%	665	995	-14%
PTBA	2,860	-1.04%	6		17.21%	PTBA	2,860	24%	2,300	3,180	-10%
ELSA	452	-3.00%	5		16.49%	ELSA	452	22%	370	545	-17%
NISP	1,365	-0.73%	6		15.68%	NISP	1,365	26%	1,080	1,445	-6%
ICBP	12,150	-3.57%	18		14.89%	ICBP	12,150	27%	9,600	12,875	-6%
BBCA	10,450	-0.48%	24		11.17%	BBCA	10,450	20%	8,675	10,950	-5%
EXCL	2,220	-0.45%	18		11.00%	EXCL	2,220	18%	1,885	2,650	-16%
SIDO	575	-2.54%	15		9.52%	SIDO	575	19%	484	780	-26%
BMRI	6,550	-5.42%	11		8.26%	BMRI	6,550	19%	5,525	7,550	-13%
BNGA	1,815	-1.36%	7		7.08%	BNGA	1,815	12%	1,625	2,220	-18%
AMRT	3,130	-4.86%	36		6.83%	AMRT	3,130	26%	2,490	3,650	-14%
BBTN	1,330	-2.92%	5		6.40%	BBTN	1,330	13%	1,175	1,610	-17%
INDY	1,515	-5.31%	8		5.57%	INDY	1,515	31%	1,155	1,825	-17%
MYOR	2,620	0.77%	18		5.22%	MYOR	2,620	19%	2,200	3,010	-13%
SMRA	605	-3.20%	9		5.22%	SMRA	605	26%	480	730	-17%
AUTO	2,480	-0.80%	6		5.08%	AUTO	2,480	38%	1,795	2,850	-13%
MEDC	1,205	-4.74%	5		4.33%	MEDC	1,205	23%	980	1,635	-26%
ERAA	434	-4.82%	6		1.88%	ERAA	434	33%	326	486	-11%
CPIN	5,075	3.57%	41		1.00%	CPIN	5,075	15%	4,410	5,775	-12%
BSDE	1,085	-4.41%	8		0.46%	BSDE	1,085	25%	870	1,340	-19%
ADMR	1,350	-3.23%	7		-0.74%	ADMR	1,350	21%	1,120	1,600	-16%
KLBF	1,590	-0.62%	24		-1.24%	KLBF	1,590	16%	1,375	1,795	-11%
ITMG	25,250	-0.49%	6		-1.56%	ITMG	25,250	7%	23,575	28,775	-12%
PTPP	416	-3.26%	5		-2.80%	PTPP	416	53%	272	640	-35%
CTRA	1,135	-5.02%	11		-2.99%	CTRA	1,135	8%	1,055	1,430	-21%
JSMR	4,720	0.21%	8		-3.08%	JSMR	4,720	10%	4,290	5,700	-17%
AVIA	484	1.68%	18		-3.20%	AVIA	484	15%	422	610	-21%
MIKA	2,730	2.25%	35		-4.21%	MIKA	2,730	12%	2,430	3,310	-18%
MPMX	1,005	-0.50%	8		-4.29%	MPMX	1,005	10%	915	1,095	-8%
BBNI	5,125	-5.09%	9		-4.65%	BBNI	5,125	20%	4,260	6,250	-18%
PWON	430	-5.29%	9		-5.29%	PWON	430	17%	366	530	-19%
MBMA	525	0.00%	74		-6.25%	MBMA	525	10%	476	730	-28%
HEAL	1,395	-1.76%	37		-6.38%	HEAL	1,395	32%	1,060	1,640	-15%
ASSA	725	1.40%	14		-8.23%	ASSA	725	19%	610	1,000	-28%
AKRA	1,340	-1.47%	10		-9.15%	AKRA	1,340	3%	1,295	1,865	-28%
ANTM	1,540	-2.22%	15		-9.68%	ANTM	1,540	31%	1,175	1,845	-17%
PGEO	1,055	-1.40%	17		-9.83%	PGEO	1,055	7%	990	1,500	-30%
TBIG	1,870	0.00%	26		-10.53%	TBIG	1,870	17%	1,600	2,180	-14%

48	ASII	5,050	-2.42%	6
	HRUM	1,185	-2.07%	9
52	INKP	7,375	1.37%	8
	ARTO	2,560	-6.57%	332
29	TKIM	6,375	-1.54%	9
	INCO	3,730	-2.86%	24
40	NCKL	855	-2.29%	10
	MNCN	330	5.10%	4
51	MTEL	600	-0.83%	23
	MDKA	2,270	-1.30%	215
17	MAPI	1,465	-5.79%	14
	BMTR	216	1.89%	5
15	BFIN	970	-1.52%	9
	BBRI	4,600	-2.34%	11
10	EMTK	460	2.22%	61
	TOWR	770	-1.91%	12
46	GOTO	64	-3.03%	#N/A
	SCMA	126	-0.79%	13
24	INTP	6,825	-1.80%	13
	BRPT	930	-3.63%	347
49	TLKM	2,740	-1.08%	12
	GGRM	13,250	-0.38%	14
42	BTPS	1,050	0.48%	10
	SMGR	3,650	0.55%	21
60	BUKA	118	0.85%	#N/A
	UNVR	1,755	-1.40%	18
53	ISAT	2,250	-5.86%	13

ASII		-10.62%
HRUM		-11.24%
INKP		-11.41%
ARTO		-11.72%
TKIM		-12.67%
INCO		-13.46%
NCKL		-14.50%
MNCN		-14.51%
MTEL		-14.89%
MDKA		-15.93%
MAPI		-18.16%
BMTR		-19.40%
BFIN		-19.50%
BBRI		-19.65%
EMTK		-22.03%
TOWR		-22.22%
GOTO		-25.58%
SCMA		-25.88%
INTP		-27.39%
BRPT		-30.08%
TLKM		-30.63%
GGRM		-34.81%
BTPS		-37.87%
SMGR		-42.97%
BUKA		-45.37%
UNVR		-50.28%
ISAT		-76.00%

ASII	5,050	18%	4,290	▼	5,950	-15%
HRUM	1,185	13%	1,050	▼	1,590	-25%
INKP	7,375	2%	7,200	▼	10,000	-26%
ARTO	2,560	39%	1,840	▼	3,860	-34%
TKIM	6,375	4%	6,125	▼	9,075	-30%
INCO	3,730	5%	3,554	▼	5,218	-29%
NCKL	855	13%	760	▼	1,125	-24%
MNCN	330	16%	284	▼	464	-29%
MTEL	600	9%	550	▼	765	-22%
MDKA	2,270	10%	2,060	▼	2,970	-24%
MAPI	1,465	18%	1,240	▼	2,050	-29%
BMTR	216	8%	200	▼	282	-23%
BFIN	970	21%	800	▼	1,380	-30%
BBRI	4,600	12%	4,090	▼	6,450	-29%
EMTK	460	31%	350	▼	670	-31%
TOWR	770	17%	660	▼	1,030	-25%
GOTO	64	28%	50	▼	116	-45%
SCMA	126	8%	117	▼	170	-26%
INTP	6,825	9%	6,275	▼	10,200	-33%
BRPT	930	6%	874	▼	1,947	-52%
TLKM	2,740	1%	2,700	▼	4,240	-35%
GGRM	13,250	0%	13,200	▼	22,975	-42%
BTPS	1,050	5%	1,000	▼	1,825	-42%
SMGR	3,650	7%	3,410	▼	6,725	-46%
BUKA	118	10%	107	▼	222	-47%
UNVR	1,755	1%	1,745	▼	3,700	-53%
ISAT	2,250	4%	2,160	▼	3,063	-27%

Sumber: Research Team Erdikha Elit Sekuritas

## KETERANGAN

%52W Low	: % Kenaikan harga saat ini dibandingkan Harga terendah 52 Minggu terakhir
%52W High	: % Penurunan harga saat ini dibandingkan Harga tertinggi 52 Minggu terakhir
52W Low	: Harga terendah selama 52 Minggu terakhir
52W High	: Harga tertinggi selama 52 Minggu terakhir
YTD (%)	: Kinerja harga saat ini dibandingkan dengan harga saham awal tahun
PER	: PER saat ini dibawah 10 kali

80 saham yang memiliki likuiditas tinggi dan kapitalisasi pasar  
**IDX80** adalah Indeks yang mengukur kinerja harga dari  
80 saham yang memiliki likuiditas tinggi dan kapitalisasi pasar  
besar serta didukung oleh fundamental perusahaan yang baik.

## LQ 45 Performance

### \*Top Gainer\*

CPIN 5,075 (3.5%)  
EMTK 460 (2.2%)  
INKP 7,375 (1.3%)  
BUKA 118 (0.8%)  
UNTR 27,200 (0.7%)

### \*Top Volume\*

GOTO 64 (37 Mn Lot)  
BBRI 4,600 (2.4 Mn Lot)  
BUKA 118 (2.1 Mn Lot)  
BMRI 6,550 (1.4 Mn Lot)  
ADRO 4,010 (1.1 Mn Lot)

### \*Top Frekuensi\*

BBRI 4,600 (76k x)  
BMRI 6,550 (32k x)  
ADRO 4,010 (23k x)  
GOTO 64 (17k x)  
BBNI 5,125 (17k x)

### \*Top Loser\*

ARTO 2,560 (-6.5%)  
ACES 855 (-6.5%)  
MAPI 1,465 (-5.7%)  
BMRI 6,550 (-5.4%)  
BBNI 5,125 (-5%)

### \*Top Value\*

BBRI 4,600 (1157.3 IDR Bn)  
BMRI 6,550 (981.1 IDR Bn)  
BBCA 10,450 (525 IDR Bn)  
ADRO 4,010 (458.3 IDR Bn)  
BBNI 5,125 (350 IDR Bn)

## All Stock Performance

### \*Top Gainer\*

FMII 350 (25%)  
BTON 452 (24.8%)  
KONI 2,110 (24.8%)  
POLU 1,915 (24.7%)  
MTFN 6 (20%)

### \*Top Volume\*

GOTO 64 (37 Mn Lot)  
BRMS 440 (30.7 Mn Lot)  
BUMI 135 (16.8 Mn Lot)  
KPIG 183 (16.2 Mn Lot)  
DEWA 98 (11.6 Mn Lot)

### \*Top Frekuensi\*

BBRI 4,600 (76k x)  
PSAB 308 (73k x)  
BRMS 440 (71k x)  
AWAN 370 (67k x)  
BSBK 56 (60k x)

### \*Top Loser\*

EMDE 163 (-20%)  
TAXI 4 (-20%)  
PART 72 (-18.1%)  
ASBI 730 (-14.6%)  
GMTD 4,100 (-14.5%)

### \*Top Value\*

BRMS 440 (1373.5 IDR Bn)  
BBRI 4,600 (1157.3 IDR Bn)  
BMRI 6,550 (981.1 IDR Bn)  
BBCA 10,450 (525 IDR Bn)  
ADRO 4,010 (458.3 IDR Bn)

# ECONOMIC CALENDAR



Monday November 04 2024		Actual	Previous	Consensus	Forecast
10:00 PM	US	<a href="#">Factory Orders MoM</a> SEP	-0.20%	-0.40%	-0.50%
	CN	Standing Committee National People's Congress			
Tuesday November 05 2024		Actual	Previous	Consensus	Forecast
8:45 AM	CN	<a href="#">Caixin Services PMI</a> OCT	50.3	50.5	50.7
11:00 AM	ID	<a href="#">GDP Growth Rate QoQ</a> Q3	3.79%	1.60%	1.80%
11:00 AM	ID	<a href="#">GDP Growth Rate YoY</a> Q3	5.05%	5%	5%
8:30 PM	US	<a href="#">Balance of Trade</a> SEP	\$-70.4B	\$-71.9B	\$-82.0B
8:30 PM	US	<a href="#">Exports</a> SEP	\$271.8B		\$264B
8:30 PM	US	<a href="#">Imports</a> SEP	\$342.2B		\$346B
9:45 PM	US	<a href="#">S&amp;P Global Composite PMI Final</a> OCT	54	54.3	54.3
9:45 PM	US	<a href="#">S&amp;P Global Services PMI Final</a> OCT	55.2	55.3	55.3
10:00 PM	US	<a href="#">ISM Services PMI</a> OCT	54.9	53.3	54.8
	CN	Standing Committee National People's Congress			
	US	Presidential Election			
Wednesday November 6 2024		Actual	Previous	Consensus	Forecast
1:00 AM	US	<a href="#">10-Year Note Auction</a>	4.07%		
4:30 AM	US	<a href="#">API Crude Oil Stock Change</a> NOV/01	-0.573M	-0.9M	
10:30 PM	US	<a href="#">EIA Crude Oil Stocks Change</a> NOV/01	-0.515M		
10:30 PM	US	<a href="#">EIA Gasoline Stocks Change</a> NOV/01	-2.707M		
	CN	Standing Committee National People's Congress			
Thursday November 07 2024		Actual	Previous	Consensus	Forecast
1:00 AM	US	<a href="#">30-Year Bond Auction</a>	4.39%		
10:00 AM	CN	<a href="#">Balance of Trade</a> OCT	\$81.71B	\$73.5B	\$70B
10:00 AM	CN	<a href="#">Exports YoY</a> OCT	2.40%		5.50%
10:00 AM	CN	<a href="#">Imports YoY</a> OCT	0.30%		-0.30%
8:30 PM	US	<a href="#">Initial Jobless Claims</a> NOV/02	216K	222K	221.0K
8:30 PM	US	<a href="#">Nonfarm Productivity QoQ Prel</a> Q3	2.50%	2.30%	2.60%
8:30 PM	US	<a href="#">Unit Labour Costs QoQ Prel</a> Q3	0.40%	0.50%	0.30%
	CN	Standing Committee National People's Congress			
Friday November 08 2024		Actual	Previous	Consensus	Forecast
2:00 AM	US	<a href="#">Fed Interest Rate Decision</a>	5%	4.75%	4.75%
2:30 AM	US	<a href="#">Fed Press Conference</a>			
4:00 PM	CN	<a href="#">Current Account Prel</a> Q3	\$54.5B		\$60.0B
10:00 PM	US	<a href="#">Michigan Consumer Sentiment Prel</a> NOV	70.5	70	70.6
11:00 PM	US	<a href="#">Fed Bowman Speech</a>			
	CN	Standing Committee National People's Congress			
Saturday November 09 2024		Actual	Previous	Consensus	Forecast
8:30 AM	CN	<a href="#">Inflation Rate YoY</a> OCT	0.40%	0.30%	0.60%
8:30 AM	CN	<a href="#">Inflation Rate MoM</a> OCT	0.00%		0.10%
8:30 AM	CN	<a href="#">PPI YoY</a> OCT	-2.80%	-2.50%	-3.00%



# CORPORATE ACTION



Thursday, November 7, 2024

## PENGUMUMAN

### UNUSUAL MARKET ACTIVITY (UMA)

05 Nov	UMA (POLU)
01 Nov	UMA PACK-W)
31 Okt	UMA (JIHD)
31 Okt	UMA (GPSO)
30 Okt	UMA (MPPA)
25 Okt	UMA (KLIN)
25 Okt	UMA (SOSS)
24 Okt	UMA (AYLS)
22 Okt	UMA (CARE)
22 Okt	UMA (INPC)

### SUSPEND / UNSUSPEND

06 Nov	Penghentian Sementara (KONI)
06 Nov	Penghentian Sementara PACK-W)
06 Nov	Penghentian Sementara (POLU)
05 Nov	Pembukaan Kembali PACK-W)
05 Nov	Pembukaan Kembali (KONI)
05 Nov	Penghentian Sementara (GPSO)
05 Nov	Penghentian Sementara (JIHD)
05 Nov	Pembukaan Kembali (JSPT)
04 Nov	Pembukaan Kembali (JIHD)
04 Nov	Penghentian Sementara (KLIN)

\*Data pengumuman diambil terakhir pada hari :  
Kamis, 07 November 2024 pukul 08:28:26

## AKSI KORPORASI

### 04 NOVEMBER 2024!

- Cash Dividend [Cum]: SIDO
- IPO [Offering Start]: BOAT
- Public Expose: IPCC, MLPL
- RUPS [Jam 13:00:00]: INET

### 05 NOVEMBER 2024!

- Cash Dividend [Ex]: SIDO
- Cash Dividend [Cum]: WINS
- Public Expose: BSSR, BBSI
- RUPS [Jam 13:00:00]: BBSI, BLUE

### 06 NOVEMBER 2024!

- Cash Dividend [Recording]: SIDO
- Cash Dividend [Ex]: WINS
- Stock Split [Cum]: KDSI
- IPO [Offering End]: NAIK
- Public Expose: PGEO, MLBI, OKAS
- RUPS [Jam 09:00:00]: GDYR

### 07 NOVEMBER 2024!

- Cash Dividend [Recording]: WINS, BSSR
- Cash Dividend [Cum]: XCID, TAPG, SMSM
- Stock Split [Ex]: KDSI
- Waran Bonus [Maturity]: RGAS-W
- IPO [Offering End]: DAAZ
- Public Expose: FUTR, BABY, BUVA, HAJJ
- RUPS [Jam 08:00:00]: NETV, FUTR, VRNA

### 08 NOVEMBER 2024!

- Bonus [Cum]: KLAS
- Cash Dividend [Distribution]: VICI
- Cash Dividend [Ex]: XCID, TAPG, SMSM
- Cash Dividend [Cum]: TEBE
- Stock Split [Recording]: KDSI
- Waran Bonus [Maturity]: KDTN-W
- IPO [Offering End]: BOAT
- IPO [Listing]: NAIK
- Public Expose: BJTM
- RUPS [Jam 14:00:00]: JATI, BISI

# DISCLAIMER



Telp : +62 21 3983 6420

Fax : +62 21 3983 6422

Email:

admin.aonline@erdikha.com

afo.elit@erdikha.com

Career: hrd@erdikha.com

## SEMARANG

JL. Sembodro No. 12A, Plomblokan  
Kec. Semarang Utara, Kota Semarang  
Jawa Tengah – 50171  
WA : +6281808054623  
Telp : +62243512068

## JAKARTA (Head Office)

Gedung Sucaco Lt 3  
JL. Kebon Sirih Kav. 71  
Jakarta Pusat – 10340  
Telp : +622139836420

### Disclaimer :

The information contained herein has been compiled from sources that we believe to be reliable. No warranty (express or implied) is made to the accuracy or completeness of the information. All opinions and estimates included in this report constitute our judgment as of this date, without regards to its fairness, and are subject to change without notice. This document has been prepared for general information only, without regards to the specific objectives, financial situation and needs of any particular person who may receive it. No responsibility or liability whatsoever or howsoever arising is accepted in relation to the contents hereof by any company mentioned herein, or any their respective directors, officers or employees. This document is not an offer to sell or a solicitation to buy any securities. This firms and its affiliates and their officers and employees may have a position, make markets, act as principal or engage in transaction in securities or related investments of any company mentioned herein, may perform services for or solicit business from any company mentioned herein, and may have acted upon or used any of the recommendations herein before they have been provided to you. Available only to person having professional experience in matters relating to investments.